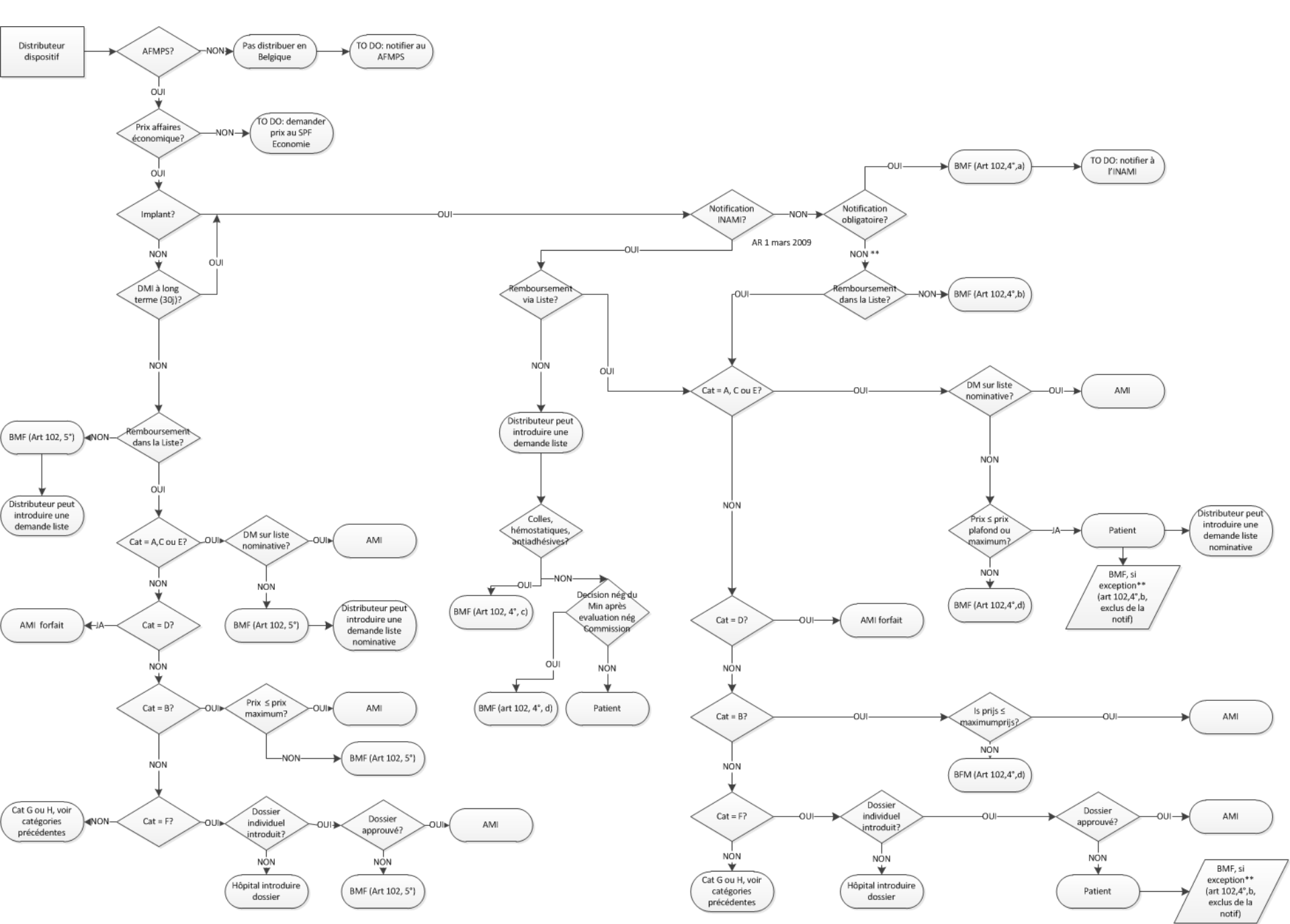


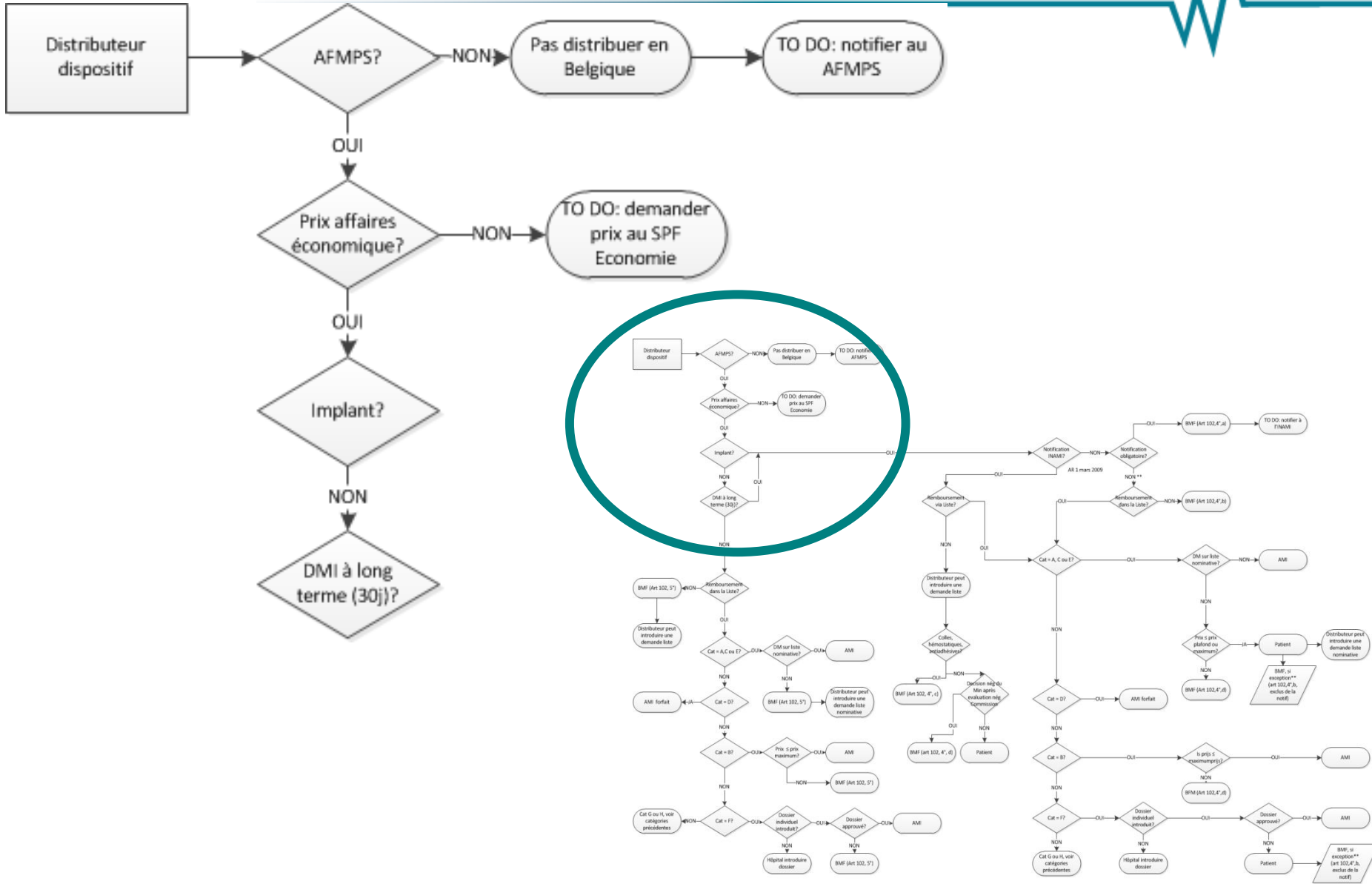


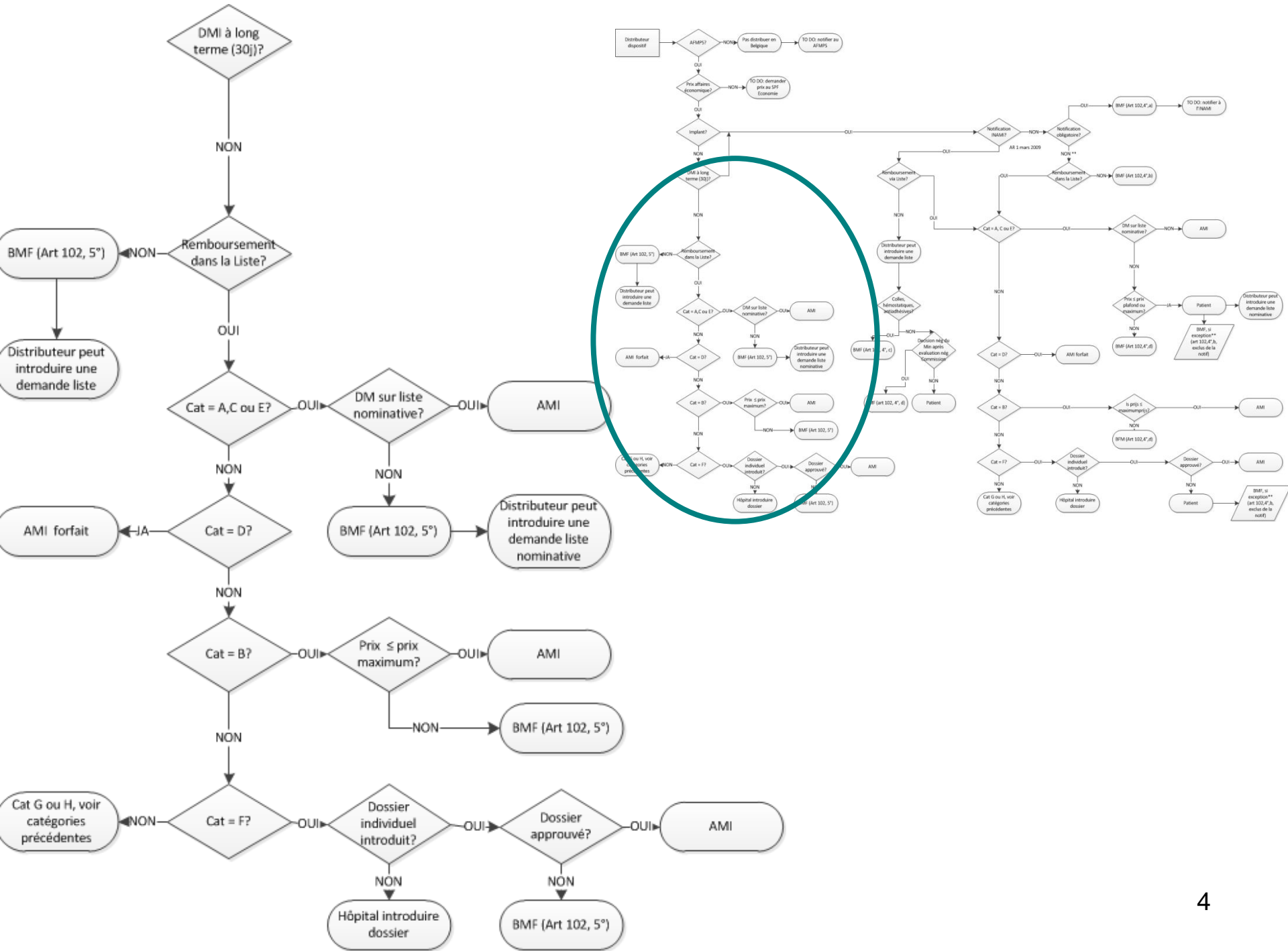
# **Implants et Dispositifs médicaux invasifs: La Nouvelle Réglementation: présentation schématique**

**Section Implants  
INAMI-SSS-Direction médicale**

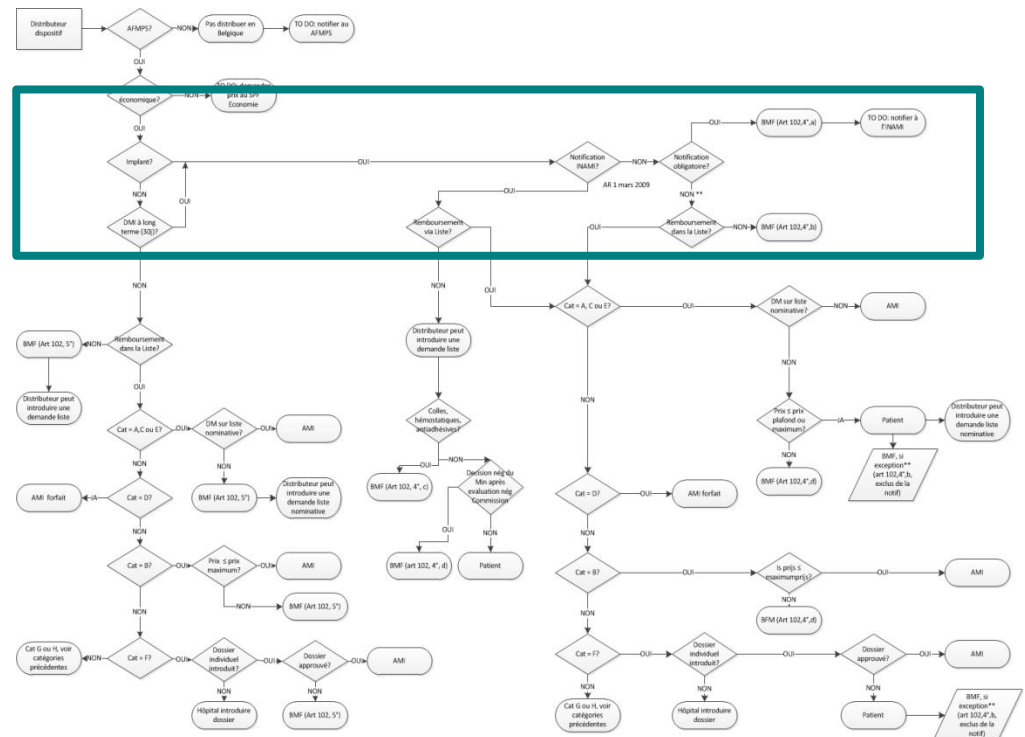
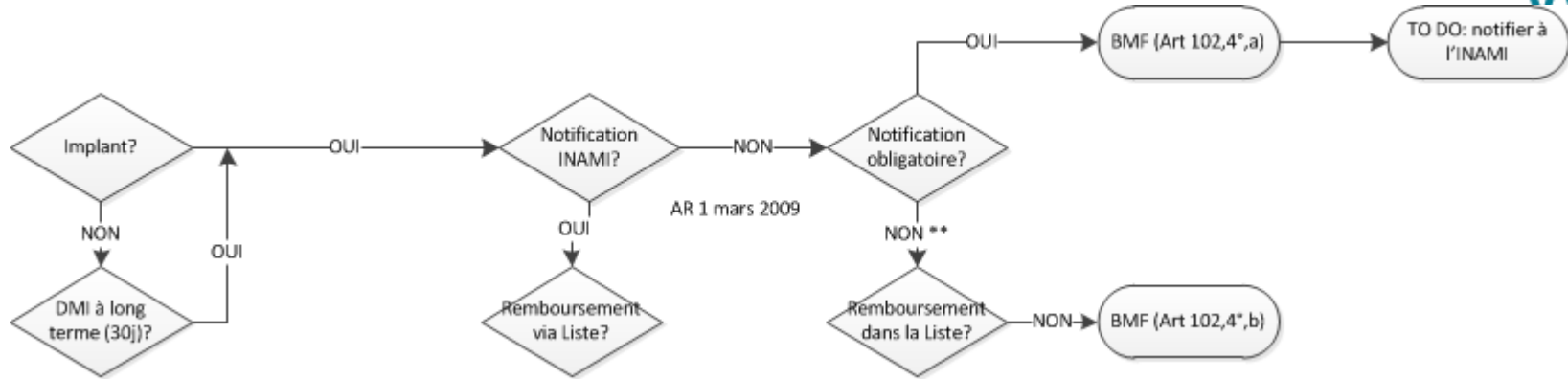


# Schéma (2)

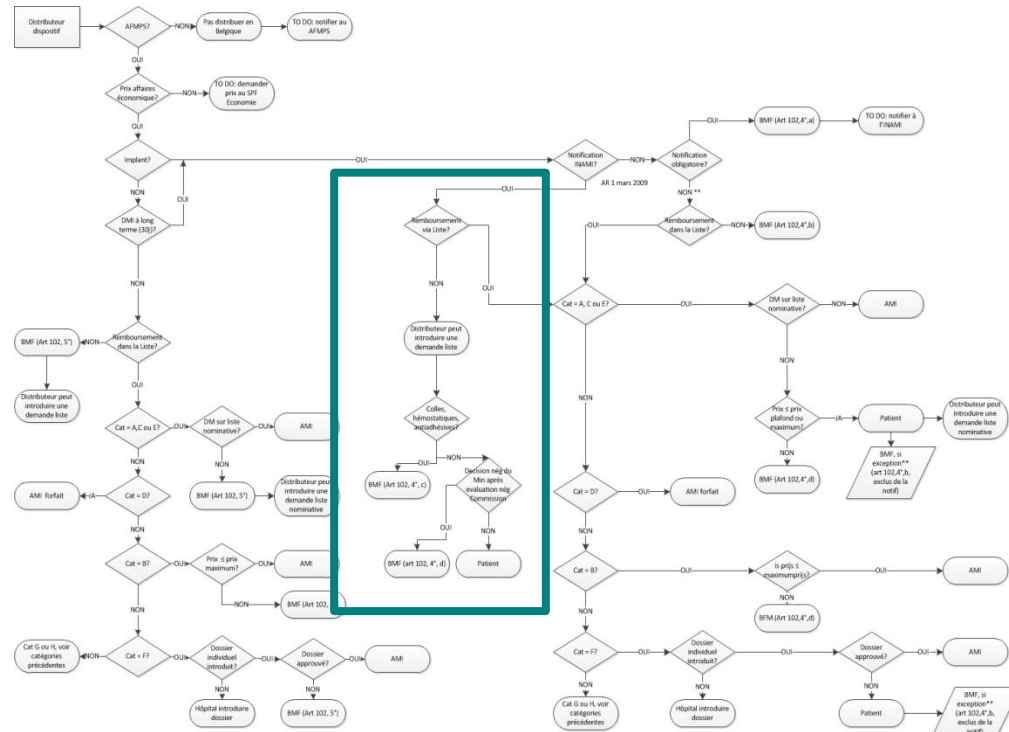
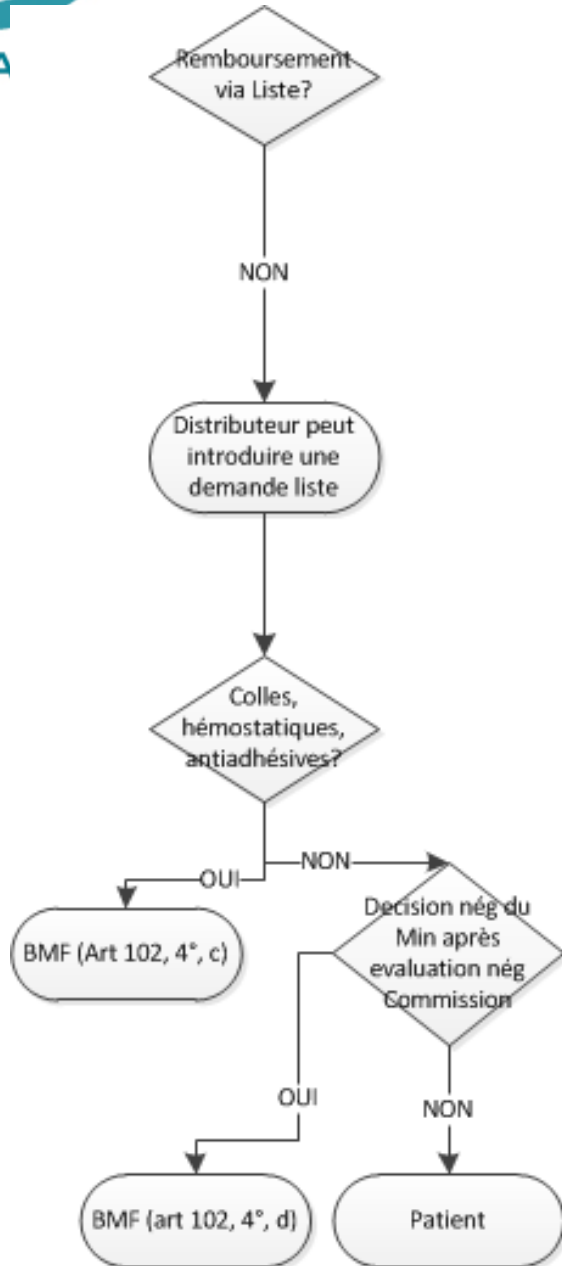


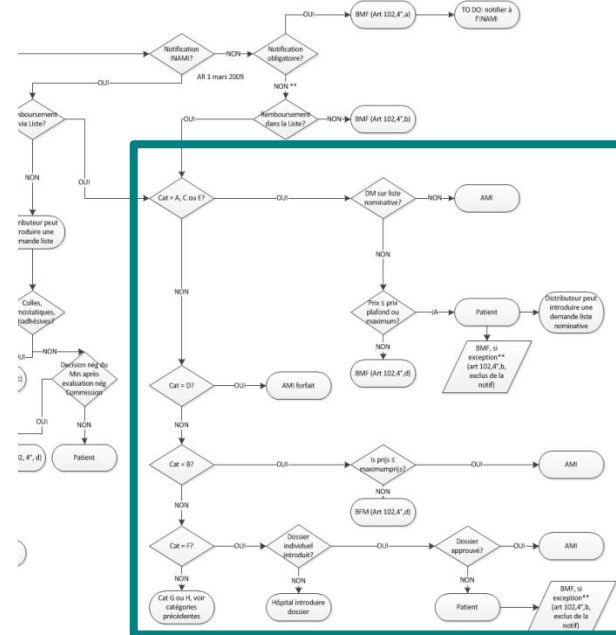
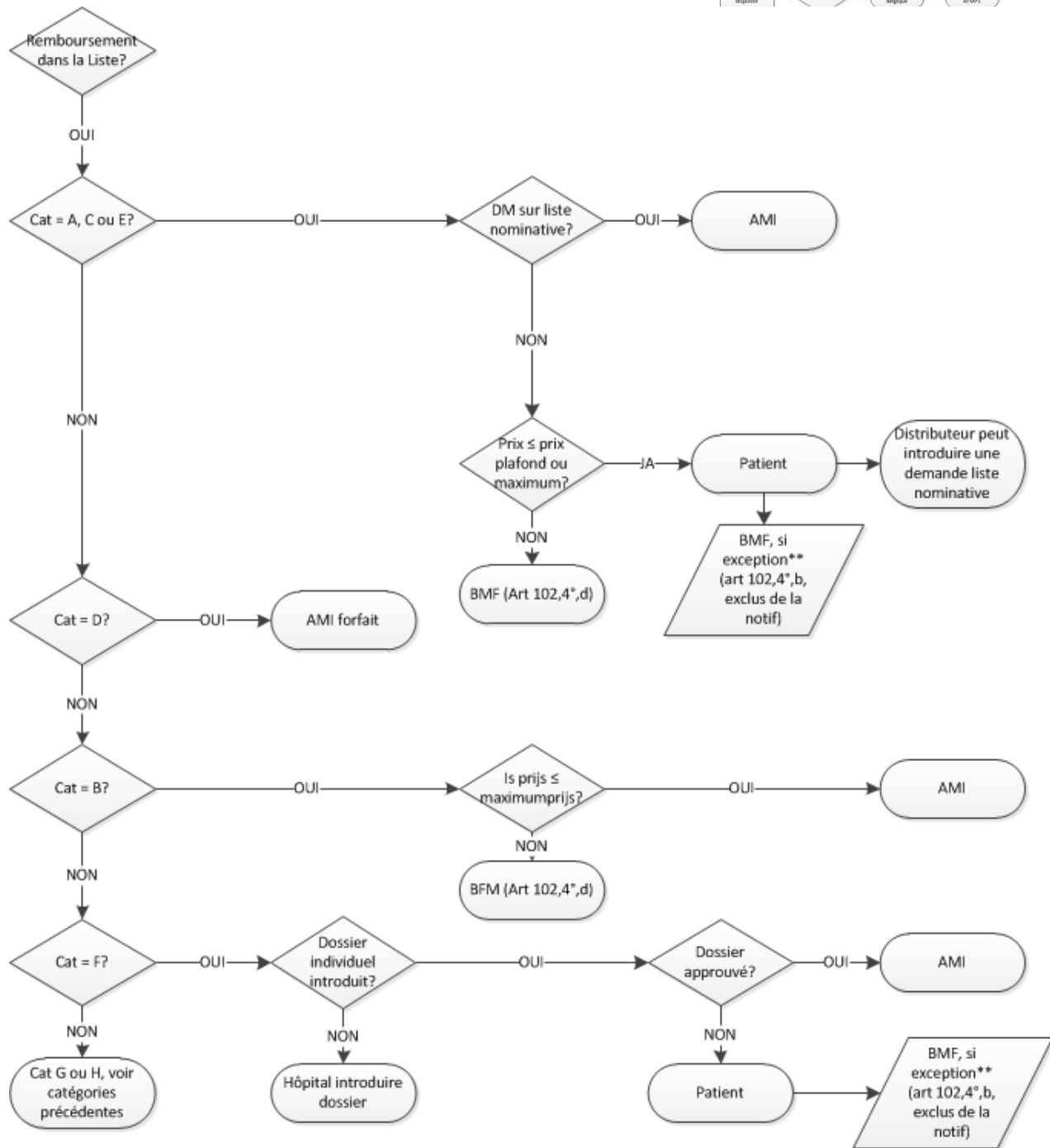


# Schéma (4)



# Schéma (5)





# Des questions?

Aujourd'hui

Ou plus tard

[implant@inami.fgov.be](mailto:implant@inami.fgov.be)

